



power of intelligence

■ PLANET_IL - intelligent recognition

PLANET_IL is an automated shipment detecting solution with up to 4 dispatching stations for private mail service providers.

It recognizes intelligent addresses, barcodes and labels on mail items such as letters, packages and envelopes.

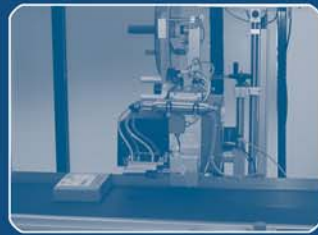
The shipment format, weight, customer and recipient are automatically detected and decoded to the carrier or route via your archived carrier database.

Archived images and data can be used for track and trace, statistics and billing.



Benefits:

- Combined shipment task: mixed mail up to 16 mm, manually up to 50 mm
- Automatic recognition of address data or barcodes, determination of format and weight
- Labels printed with a logo, barcode and carrier number
- Online- and offline videocoding for unread or uncertain data
- Archiving of images and data



power of intelligence

■ **PLANET_IL - intelligent recognition**

All necessary shipment data - available in seconds

Features:

- Automated complete shipment
- Label printing
- Throughput of up to 7.500 shipments/h per line
- Address/barcode recognition at all angles
- Very high reading rates
- Data requested from different locations
- Outstanding cost/benefit ratio



Example of use:

- 2 dispatching stations (1 feed, 1 manual)
- 3 videocoding workstations
- 5.000 shipments/hour
- 80-85% machine-generated text
- 80% reading rate before videocoding
- This result in a throughput per employee



Shipments:

- Catalogues, customer magazines, packets etc.
- Maximum width 35 cm
- Maximum height 5 cm
- Customized system adjustment
- 3.000, 5.000, 7.500 items/hour
- Calibratable letter scale up to 2 kg



PLANET intelligent systems GmbH
Residence Park 1-7
19065 Raben Steinfeld

fon: +49 (0)385 3030-0
fax: +49 (0)385 3030-250
web: www.planet.de
eMail: logistik@planet.de

PLANET intelligent systems Inc.
1000 Geneva Court
El Dorado Hills, CA 95762
USA

fon: +1 916 941 0930
mob: +1 650 531 2790
fax: +1 530 684 9726
web: www.planet.de
eMail: logistic@planet.de

